

DO NOT SCALE FROM THIS DRAWING. USE FIGURED DIMENSIONS IN ALL CASES. VERIFY DIMENSIONS ON SITE AND REPORT ANY DISCREPANCIES TO THE DESIGNERS IMMEDIATELY. THIS DRAWING TO BE READ IN CONJUNCTION WITH THE DESIGNERS SPECIFICATION. © THIS DRAWING IS COPYRIGHT AND MAY ONLY BE REPRODUCED WITH THE DESIGNERS PERMISSION.

#### NOTES:

- ALL DRAWINGS ARE TO BE READ IN CONJUNCTION WITH ALL RELEVANT SPECIFICATIONS, BILLS OF QUANTITIES, ARCHITECTURAL SERVICES AND ENGINEERING DRAWINGS.
- ALL LEVELS ARE IN METRES RELATED TO ORDNANCE DATUM MALIN HEAD.
- ANY DISCREPANCIES BETWEEN THESE DOCUMENTS SHALL BE BROUGHT TO THE ATTENTION OF THE ENGINEER.
- DRAWINGS ARE NOT TO BE SCALED.
- ALL DIMENSIONS ARE IN MILLIMETRES, UNLESS NOTED OTHERWISE.

#### Concrete Notes :

Concrete mix design for covered/unexposed foundations:  
Concrete mix/specification in accordance with IS EN 206:2013 + A1:2016.  
Aggregate in accordance with the recommendations in IS EN 12620:2002.  
Min. aggregate size to be 20mm (u.n.o.)  
Strength class to be C30/37 (Min 37N compressive cube strength)  
Minimum cement content of 300kg/m³.  
Maximum water/cement ratio of 0.55.  
Concrete exposure class XC4.

Concrete mix design for exposed structural concrete:  
Concrete mix/specification in accordance with IS EN 206:2013 + A1:2016.  
Aggregate in accordance with the recommendations in IS EN 12620:2002.  
Min. aggregate size to be 20mm (u.n.o.)  
Strength class to be C40/50 (Min 50N compressive cube strength)  
Minimum cement content of 340kg/m³.  
Maximum water/cement ratio of 0.45.  
Concrete exposure class:  
XF1 - Vertical surface exposed.  
XF3 - Horizontal surface exposed.

Concrete mix design for footpaths:  
Concrete mix/specification in accordance with IS EN 206:2013 + A1:2016.  
Aggregate in accordance with the recommendations in IS EN 12620:2002.  
Min. aggregate size to be 20mm (u.n.o.)  
Strength class to be C28/35 (Min 35N compressive cube strength)  
Minimum cement content of 300kg/m³.  
Maximum water/cement ratio of 0.55.  
Concrete exposure class XF4.  
Finish to Footpath to be U4 brushed finish.

Concrete finishes:  
All concrete finishes to be in accordance with EirGrid Functional Spec Document:  
- XDS-GFS-13-001-R2

All exposed concrete corners to be finished with a 25mm x 25mm chamfer.

Reinforcement to comply with BS 4449, BS 4482 and BS 4483.  
Minimum cover to reinforcement:  
Foundations in contact with ground surface 65mm (U.N.O.)  
Retaining walls: 40mm (U.N.O.)  
Columns: 40mm (U.N.O.)  
Beams: 35mm (U.N.O.)  
Slabs: 40mm (U.N.O.)  
Stairs: 35mm (U.N.O.)  
Reinforcement lap lengths to be as follows unless noted otherwise:

A393 mesh	450mm
H10	400mm
H12	500mm
H16	650mm
H20	800mm

**Note:**  
All external Steelwork galvanised to IS EN ISO 1461 and powder coated to IS EN 13438.  
RAL 5005 'moss green' to match Palisade Fence.

**Note:**  
Dual access to be Provided, the main gate access to the Compound to be provided with a double lock.

**Note:**  
50mm earthing duct to be provided at both gate posts.  
Provide gate stops to prevent gate swing.  
**Note:**  
All construction details to be confirmed with EirGrid/ESS prior to fabrication.

#### Notes :

All construction products covered by a harmonized European product standard shall have declaration of performance and a CE mark in compliance with the construction product regulation (EU) No. 395/2011 CPR.

**Note:**  
All work to be in accordance with EirGrid Functional Spec Document:  
- XDS-GFS-13-001-R2

P01	07/03/25	ISSUED FOR PLANNING	OR	PC
REV	DATE	DESCRIPTION	BY	APP

PROJECT:

BALLINLA WIND FARM

TITLE:

IPP COMPOUND PROPERTY GATE DETAILS

CLIENT:

BALLINLA WIND FARM LIMITED

**MWP**  
ENGINEERING AND ENVIRONMENTAL CONSULTANTS

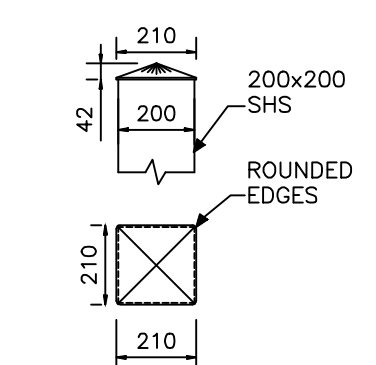
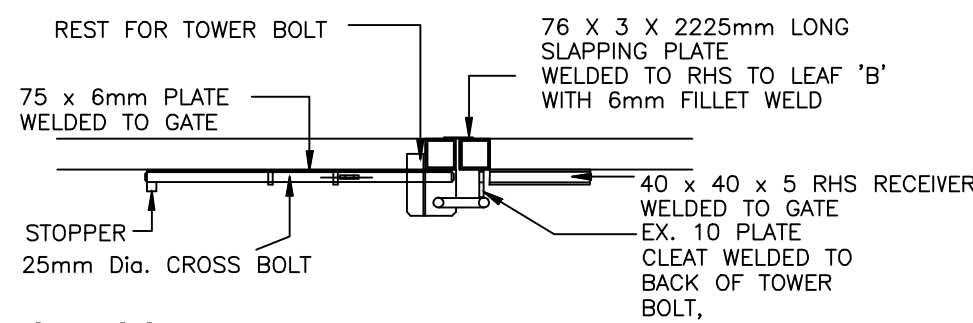
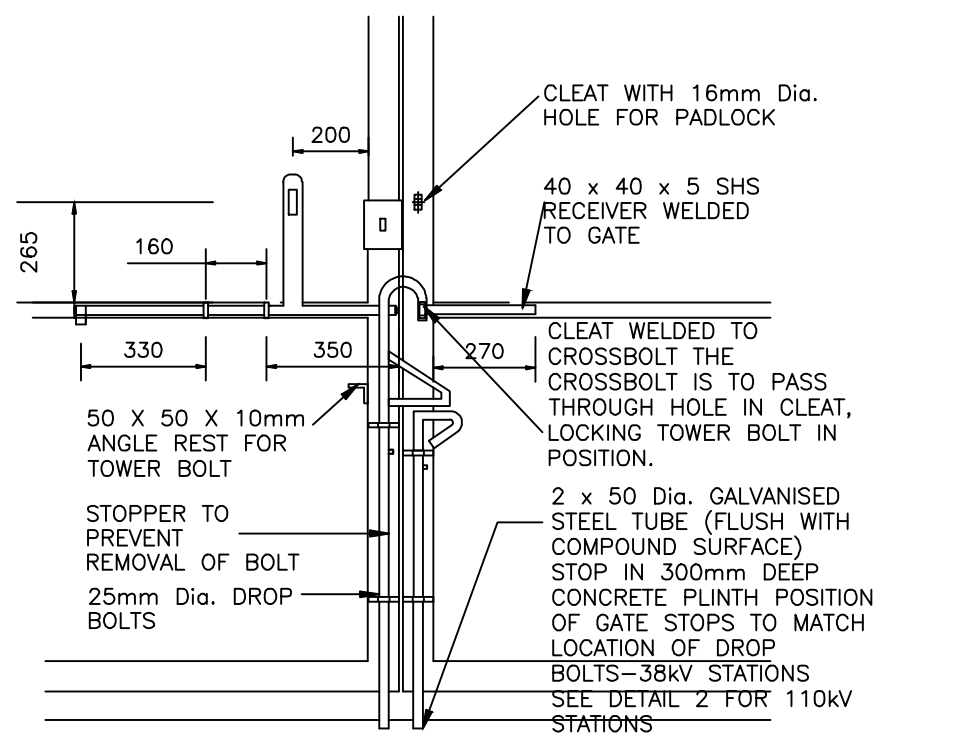
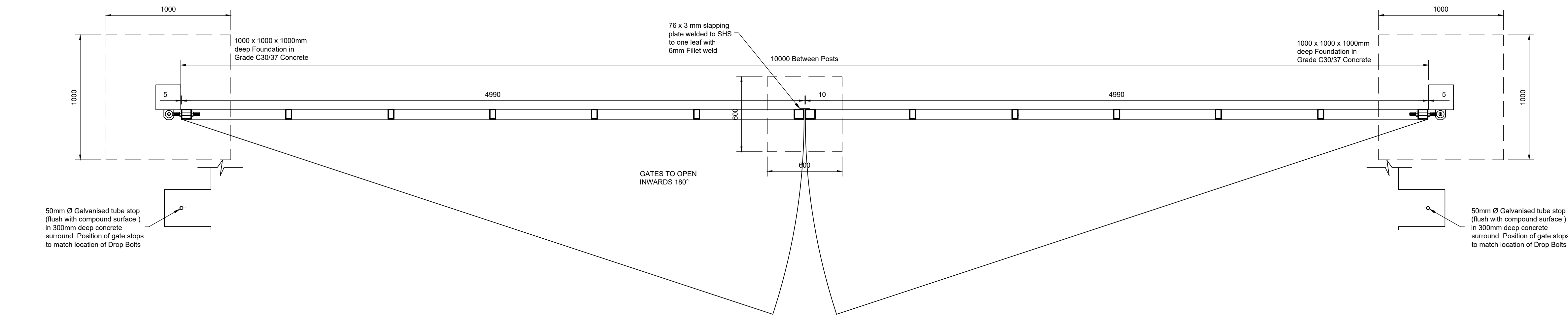
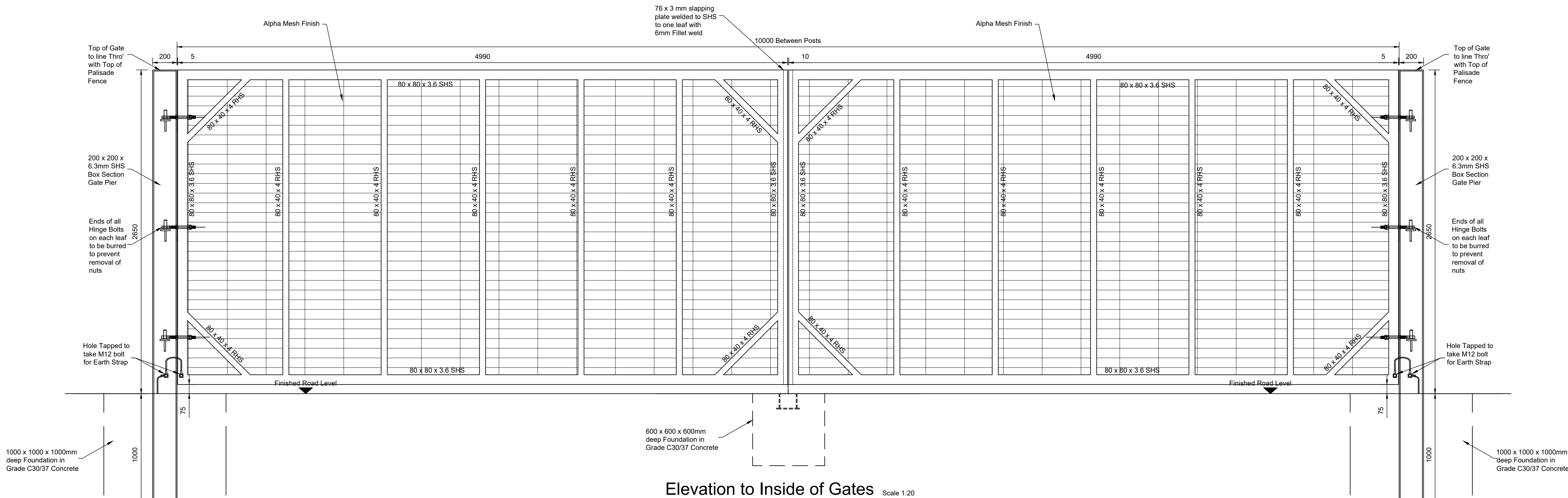
CORK | TRALEE | LONDON | LIMERICK  
mwp.ie

DRAWN:	CHECKED:	APPROVED:
O.R.	S.H.	P.C.

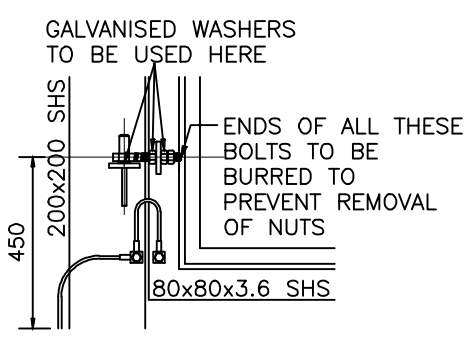
PROJECT NUMBER:	DATE:	SCALE @ A1:
23882	MAR'25	As Shown

STATUS DESCRIPTION	STATUS:
FOR APPROVAL	S4

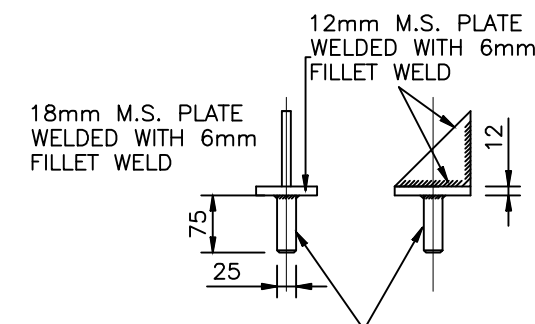
DRAWING NUMBER:	REV:
23882 - MWP - 00 - 00 - DR-C - 5425	P01



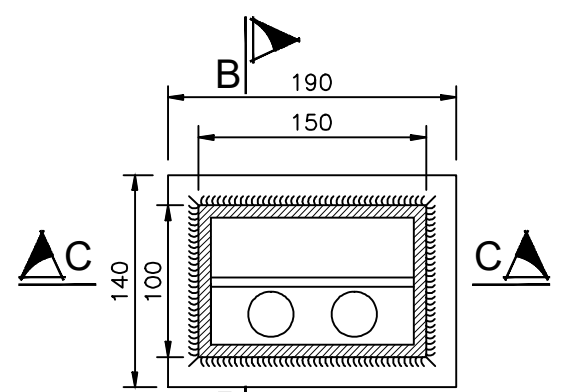
Post Cap Detail  
Scale 1:20



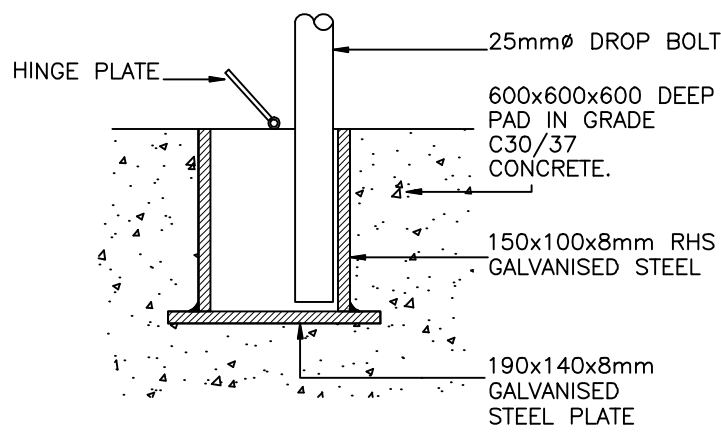
Gate Hinge Detail  
Scale 1:20



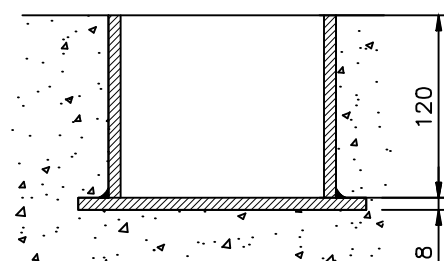
Hinge Mount Detail  
Scale 1:10



Drop Bolt Detail  
Scale 1:20



Section B-B  
Scale 1:20



Section C-C  
Scale 1:20